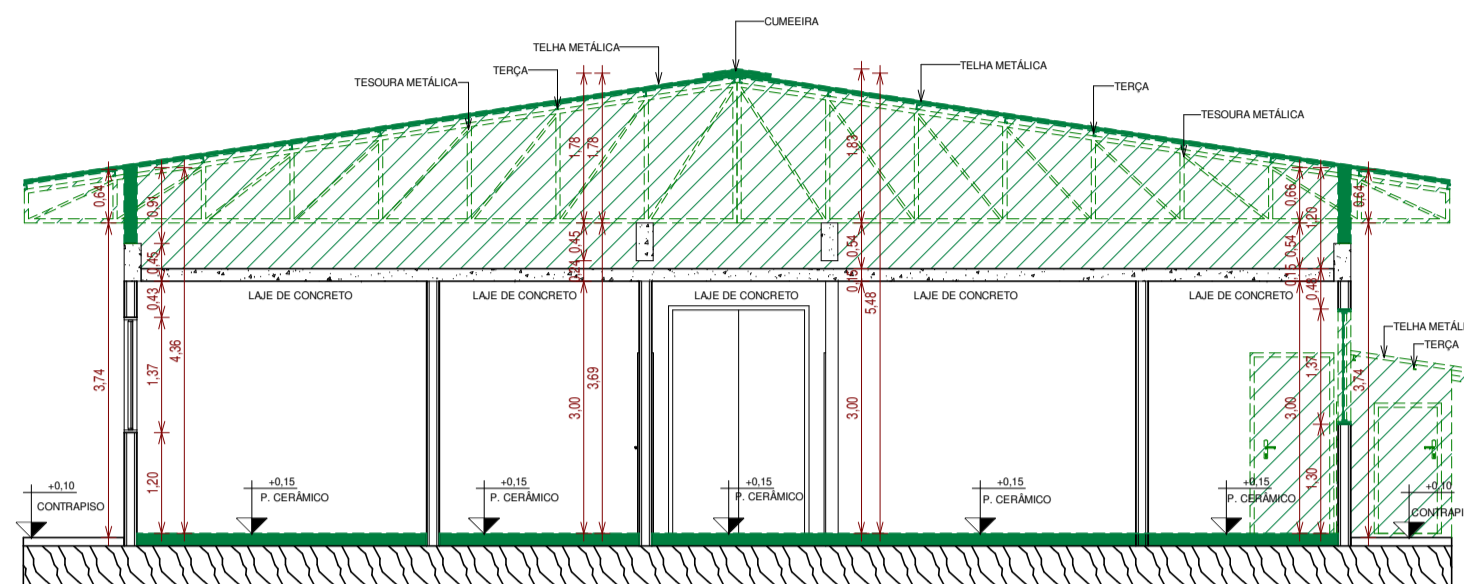
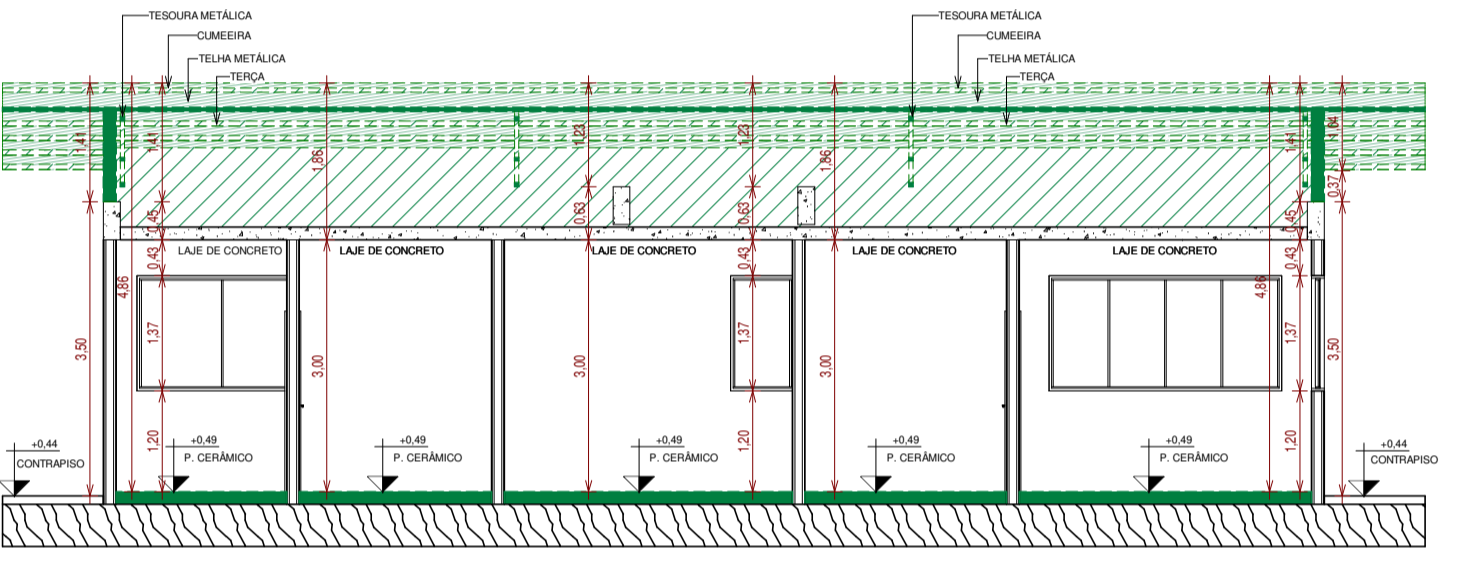


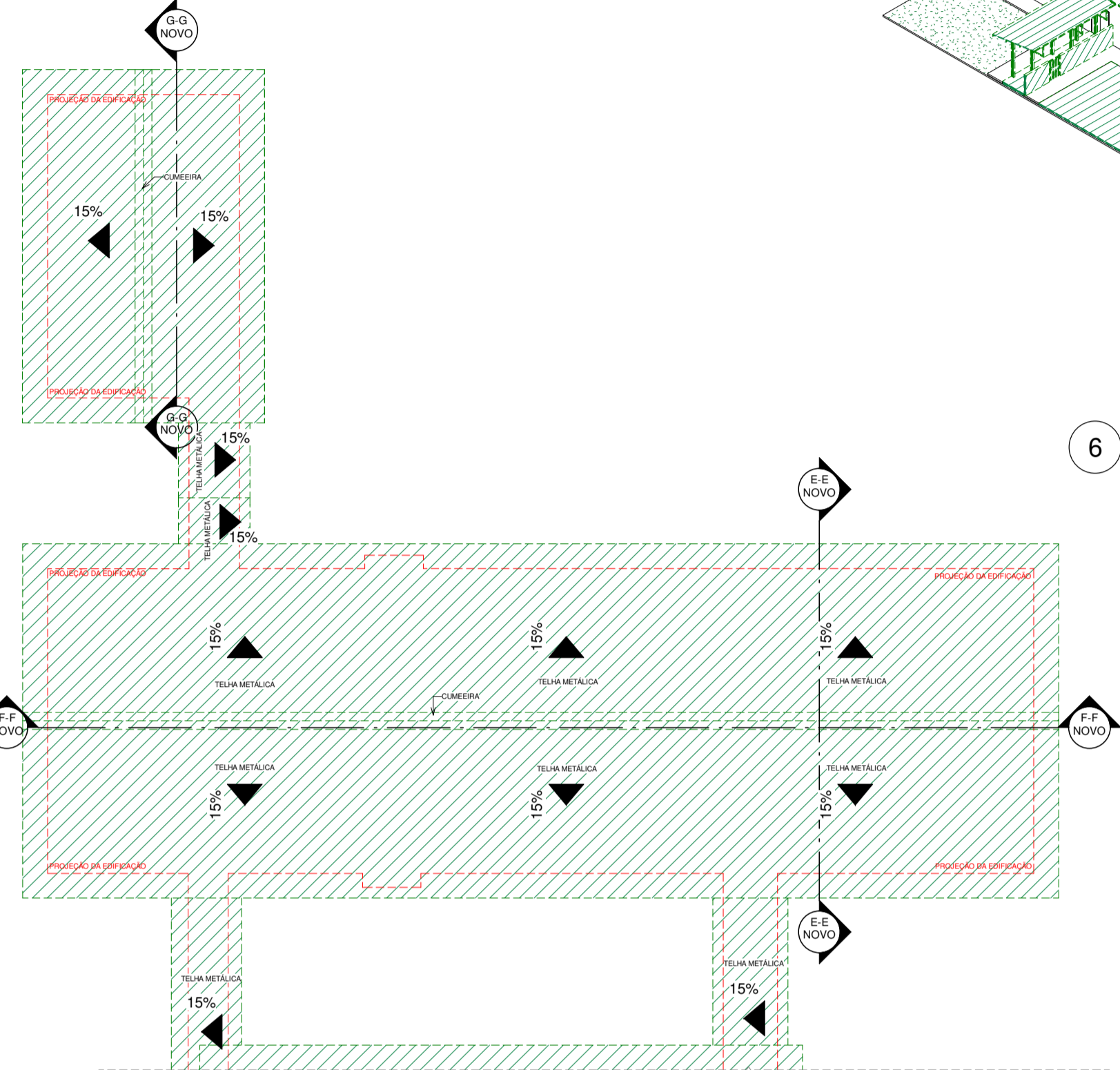
4 CORTE FF  
ESCALA 1:90



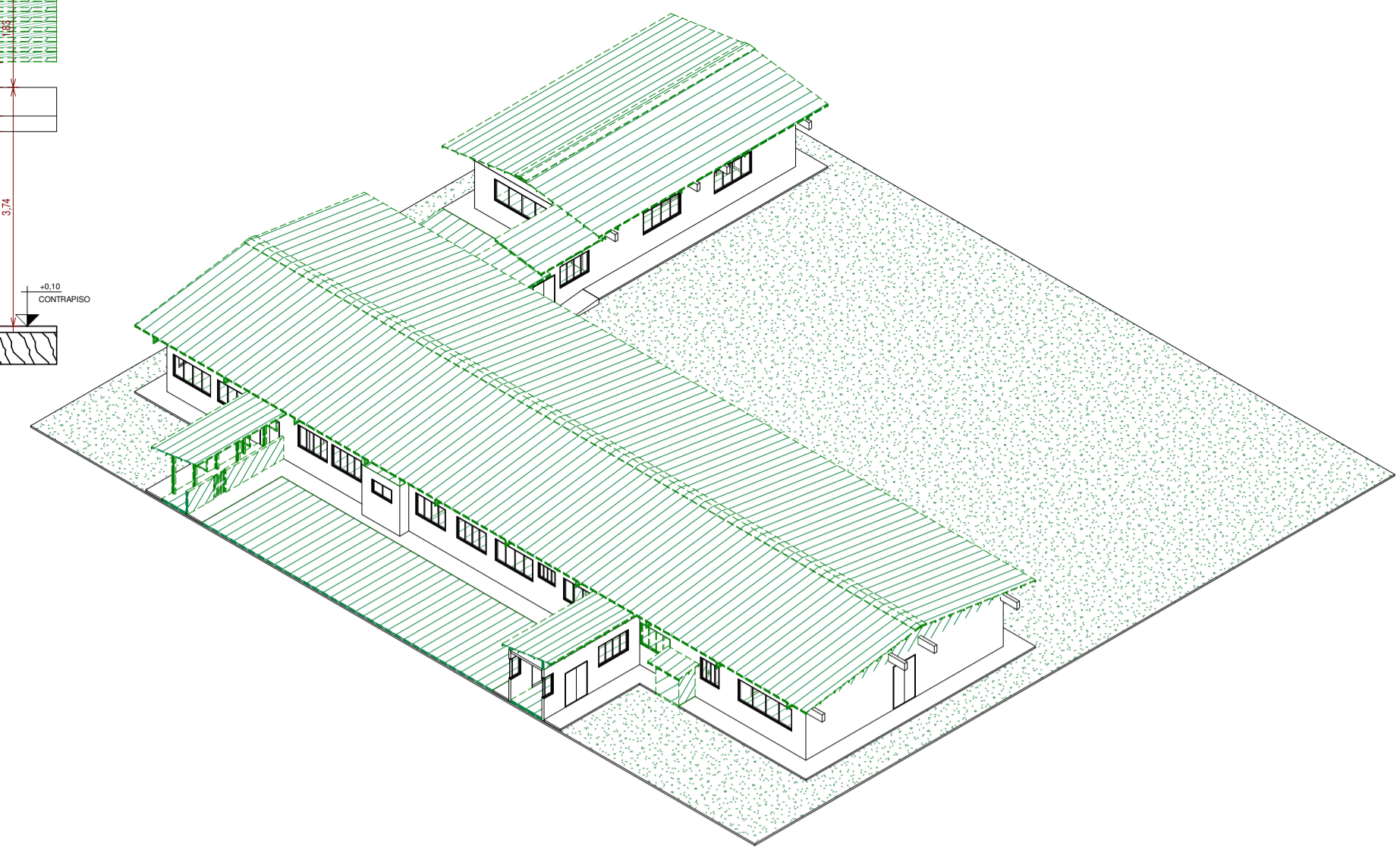
3 CORTE EE  
ESCALA 1:90



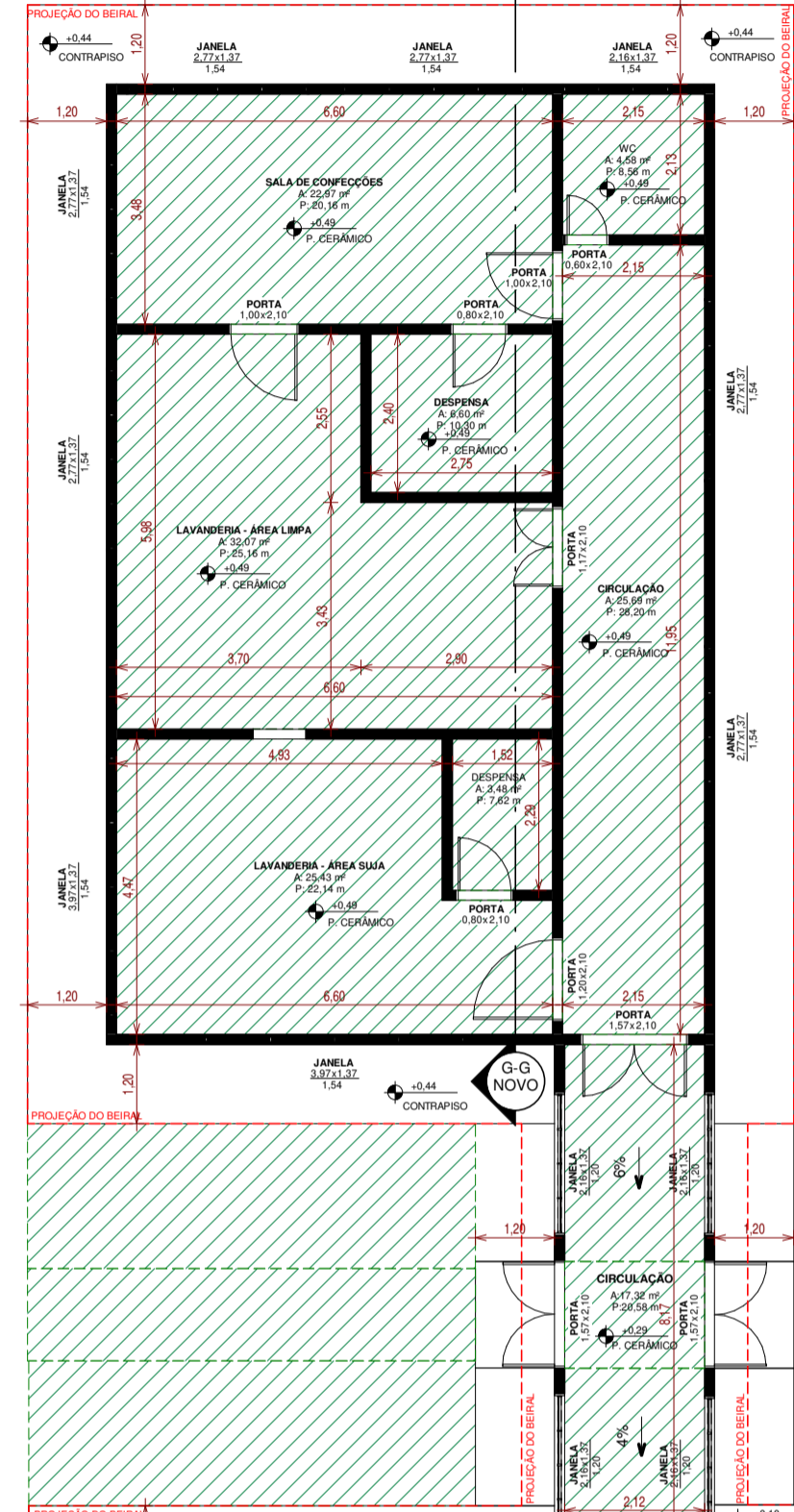
5 CORTE GG  
ESCALA 1:90



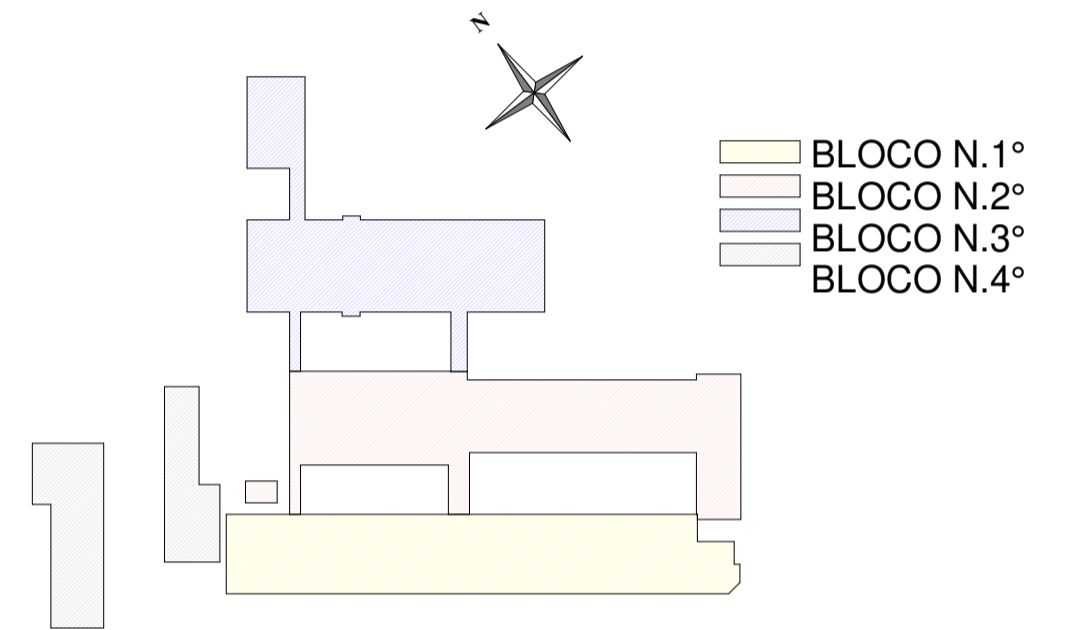
2 COBERTURA BLOCO 3° - NOVO  
ESCALA 1:250



6 VISTA 3D - BLOCO 3° NOVO  
ESCALA



1 TÉRREO BLOCO N.3° - NOVO  
ESCALA 1:110



**CONSOLIDANDO O FUTURO**

Prefeitura Municipal de Anaurilândia - MS.

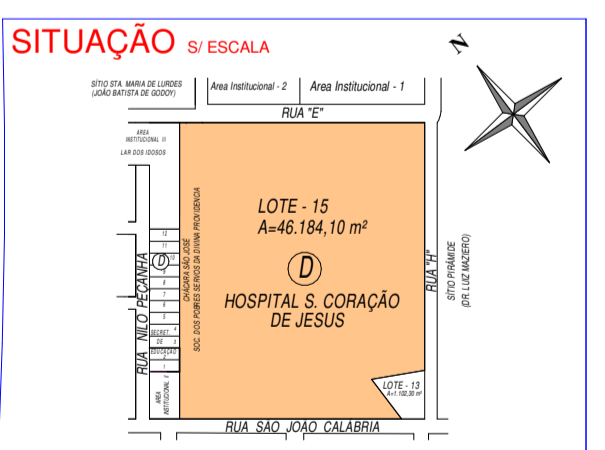
PROJETO DE REFORMA E AMPLIACAO DO HOSPITAL SAGRADO CORACAO DE JESUS

CONTEUDO BLOCO 3° - NOVO DATA AGOSTO/2022 FOLHA 11/17 ART: 1320220030763

PROPRIETARIO MUNICIPIO DE ANAURILANDIA - MS CNPJ 03.575.727/0001-95

LOCAL RUA SAO JOAO CALABRIA - QUADRA "D" - LOTE 15 CEP 79770-000

CIDADE ANAURILANDIA - MS BAIRRO JARDIM ESPERANCA ESCALA INDICADAS



QUADRO DE AREAS

AREA A REFORMAR	3.367,89 M2
AREA A AMPLIAR	132,42 M2
AREA TOTAL	3.500,31 M2

MUNICIPIO DE ANAURILANDIA-MS  
PREFEITO MUNICIPAL  
Edson Stefano Takazono

AUTOR DO PROJETO RESP. TECNICO  
SECRETARIA MUNICIPAL DE OBRAS,  
DEFESA CIVIL, TRANSPORTES E PROJETOS  
Maycon Naga  
Engenheiro Civil: CREAMS - 35225

APROVACAO